

## **Directions to the Innovation centre Broad Quay, Bath BA1 1UD**

### **By rail**

Bath Spa mainline station is on the London Paddington to Bristol Temple Meads line. Very frequent services run to London, a journey of approximately 90 minutes. Bristol, with connections to the Midlands, the North and the South West is approximately a 15 minute journey.

Exit Bath Spa station and turn left. Follow the road around and after 50 metres when you find yourself by Churchill Bridge, The Innovation Centre is directly opposite.

### **By bus**

Exit the bus station and turn left. Follow the road around and very shortly you will find yourself by Churchill Bridge. The Innovation Centre is directly opposite.

### **By air**

Bristol International is the closest airport to Bath and is about 20 miles away. There is a frequent express coach service from the airport to Bristol Temple Meads rail station and Marlborough Street bus station, from where frequent trains and buses go to Bath. On arrival use 'by rail' directions.

### **By car**

Approaching from the M4, leave the motorway at junction 18 and follow the A46 south 8 miles along the dual carriageway to the Bath exit. Follow signs for Bath Spa train station. Go over the river via Churchill bridge and you will be facing The Innovation Centre. Follow the road round to the left (keeping in the right-hand lane), take the second right around the multi-story car park and park in Avon St car park – pay on exit.

We do not have any spaces available at the centre. However the loading bay can be used with a permit (available from Reception) for up to 20 minutes for loading and collection.

### **Taxi numbers**

Abbey Taxis: 01225 44 44 44

V Cars: 01225 48 44 88

More numbers can be found here:

<http://www.bathnes.gov.uk/bathnes/business/licencesstreettrading/taxisdisabledaccess.htm>

### **Park and Ride**

Bath operates a frequent Park and Ride service from various locations throughout the city. Details can be found here:

<http://www.bathnes.gov.uk/BathNES/transportandstreets/Parking/parkandride/default.htm>

## **Accommodation**

Local hotels and Bed & Breakfast can be found on the links below:

[www.visitbath.co.uk](http://www.visitbath.co.uk)

[www.LateRooms.com/Bath-Hotels](http://www.LateRooms.com/Bath-Hotels)

[www.booking.com/Bath](http://www.booking.com/Bath)

Accommodation is also available at the University of Bath; please follow the link below:

<http://www.haatbath.co.uk/hospitality/beds/>

Recommended hotels:

**3 Stars**

<b>Name</b>	<b>Website</b>	<b>Price From</b>
Bath YMCA	<a href="http://www.bathymca.co.uk">www.bathymca.co.uk</a>	£28
Pulteney House	<a href="http://www.pulteneyhotel.co.uk">www.pulteneyhotel.co.uk</a>	£45 - £100
Pratts Hotel	<a href="http://www.forestdale.com">www.forestdale.com</a>	£54
Bailbrook House	<a href="http://www.bailbrookhouse.co.uk">www.bailbrookhouse.co.uk</a>	£80
Duke Hotel	<a href="http://www.dukesbath.co.uk">www.dukesbath.co.uk</a>	£99

**4 Stars**

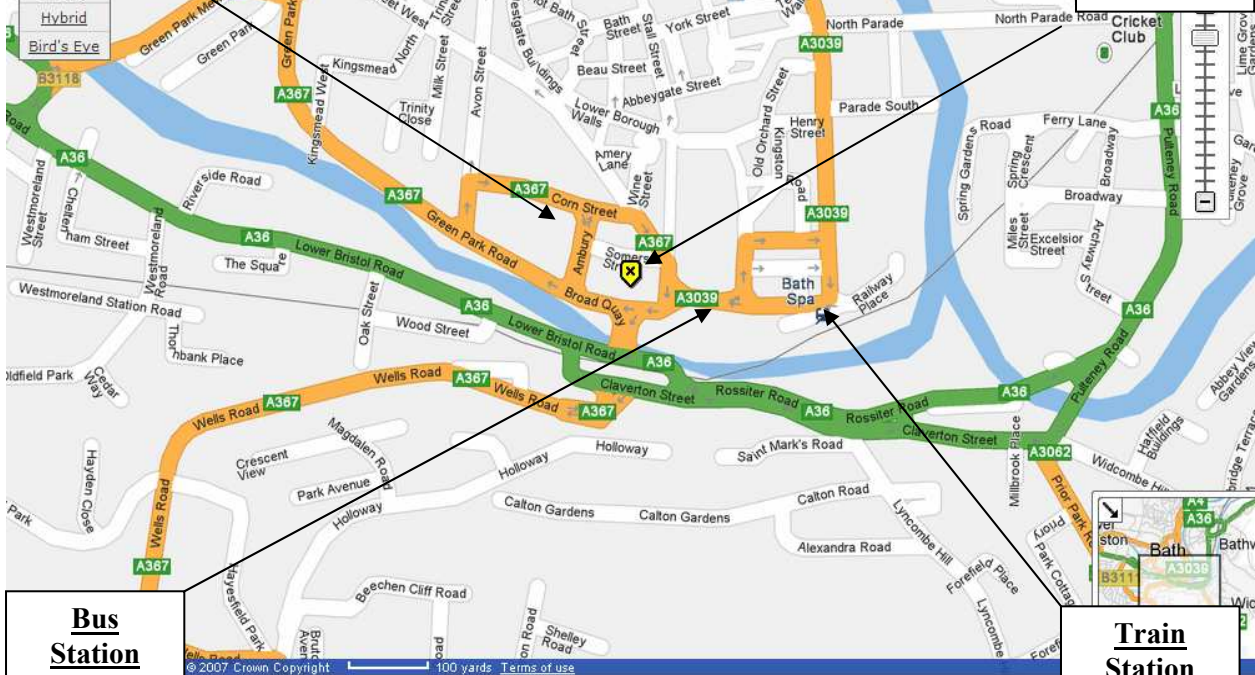
<b>Name</b>	<b>Website</b>	<b>Price From</b>
Oldfields	<a href="http://www.oldfields.co.uk">www.oldfields.co.uk</a>	£49
Bailbrook Lodge Hotel	<a href="http://www.bailbrooklodge.co.uk">www.bailbrooklodge.co.uk</a>	£60
One Three Nine	<a href="http://www.139bath.co.uk">www.139bath.co.uk</a>	£60
Abbey Heights Apartments	<a href="http://www.abbeyheights.com">www.abbeyheights.com</a>	£155
The Bath Priory Hotel	<a href="http://www.thebathpriory.co.uk">www.thebathpriory.co.uk</a>	£185

**5 Stars**

<b>Name</b>	<b>Website</b>	<b>Price From</b>
Tasburgh House	<a href="http://www.bathtasburgh.co.uk">www.bathtasburgh.co.uk</a>	£70
Villa Magdala	<a href="http://www.villamagdala.co.uk">www.villamagdala.co.uk</a>	£75
The Ayrlington	<a href="http://www.ayrlington.com">www.ayrlington.com</a>	£80
Three Abbey Green	<a href="http://www.threeabbeygreen.com">www.threeabbeygreen.com</a>	£85
Royal Crescent Hotel	<a href="http://www.royalcrescent.co.uk">www.royalcrescent.co.uk</a>	£215

**Avon St,  
Car Park**

**The  
Innovation  
centre**



**Bus  
Station**

**Train  
Station**